

Article: non-invasive rapid growth hybrid paulownia root plants with healthy certificate

About the company:

15 years paulownia tree plant and export experience.

Provide technical guidance and phytosanitary certificate.

Welcome visit our paulownia plantation.

Cell: 0086 13305306262 Wechat: paulownia01 Skype: shujie-lv

More information about Paulownia	
species Paulownia	Hybrid 9501 Paulownia, Paulownia shantong, Paulownia elongata, Paulownia fortunei, Paulownia tomentosa, Paulownia 9503, Paulownia Kiri, Paulownia fargesii, Paulownia australis, royal empress tree, Paulownia Catalpifolia, empress tree, foxglove tree, and so on.
Paulownia seed	Lower price, very lightweight and small size, high technical requirements, hard to get quality seedling in a year. Offer a file on how to plant Paulownia seeds.
Paulownia root cutting	Plant method simple, save labor and time, 95%-100% of survival rate, grows orderliness and fast, get better paulownia tree and harvest earlier. We will send a technical guide for free after confirming the order.
Paulownia stump	Very easy to survive, grow very fast, survive 99-100%, use for forest directly.
Certified	phytosanitary certificate, certificate of origin, quality certificate.
Express suggest	DHL and EMS, because the roots, seeds and stump will go to a long trip through several changes of temperature, quick Express can guarantee the quantity.

Paulownia roots & paulownia stumps in our factory









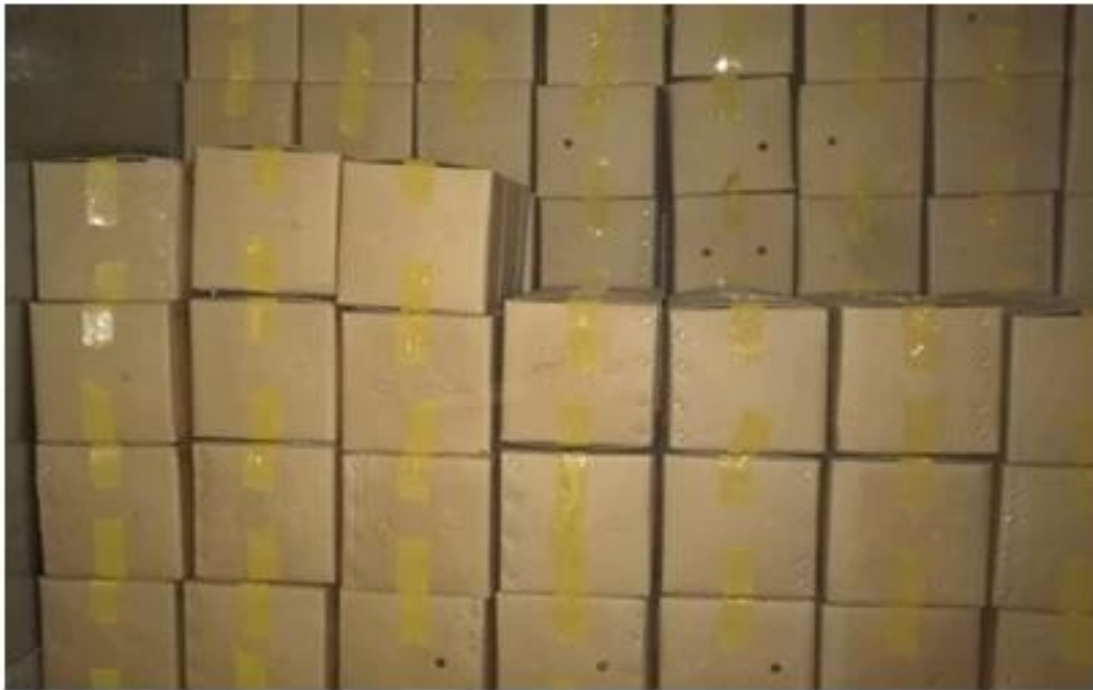
Disinfection paulownia root



Packing paulownia root



Paulownia stump package



Our paulownia tree plantation,welcome to visit.











one year tree



half year tree



two year tree



4-5 year tree



7year tree



big tree



FAQ:

1. The best way to breed Paulownia trees?

Root cuttings of the paulownia and paulownia stump, especially for the new planter.

2. Delivery time?

From the end of November to next April.

Offer storage service of paulownia root cutting and root stumps

3. Does it workable to plant paulownia roots cutting into the soil directly?

Yes of course. Put all root in the ground, slightly firm, cover head by at least 3-5cm soil.

4. withstand temperature

suggest -25- + 45 degrees celsius

5. Do paulownia plant needs special terrain?

No, the normal soil is ok.

6. water requirements?

Paulownia have a good dry resistant, especially height of 50 cm. No need water them every day.

7. How to get a better trunk?

Choose the best species with good manage.

8 How many years can be used for timber?

7-8years experience, you can start fresh cut five years.

Certified:



For any questions do not hesitate to ask the following contact methods:

Whatsapp/cell:0086 13305306262

Wechat: paulownia01

Skype: shujie-lv

Email: fortune@fortunewoods.com